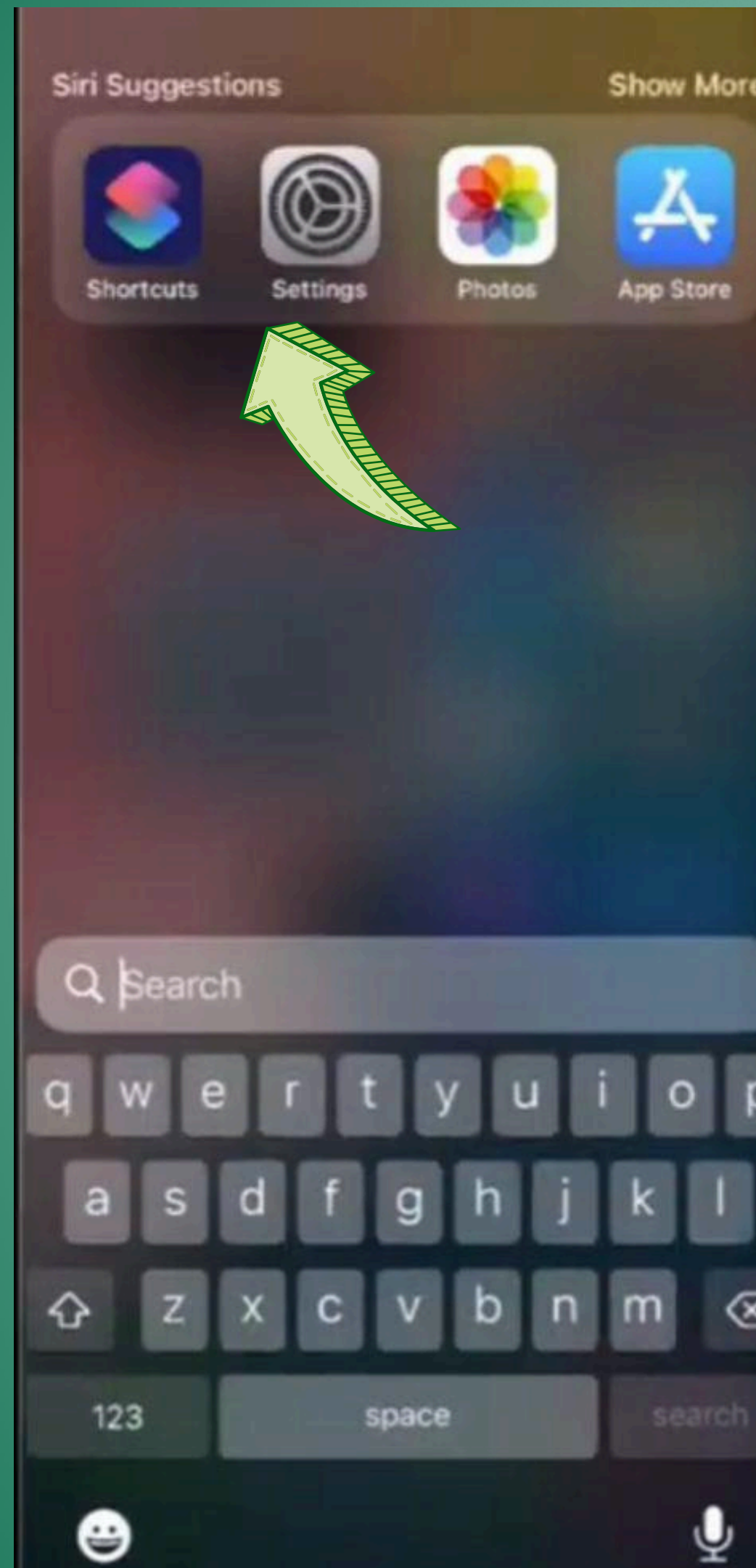


HOW TO SET UP THE “DRIVER POWER” APP: A 2 PART TUTORIAL



PART 1: SET A DRIVER POWER APP SCREENSHOT



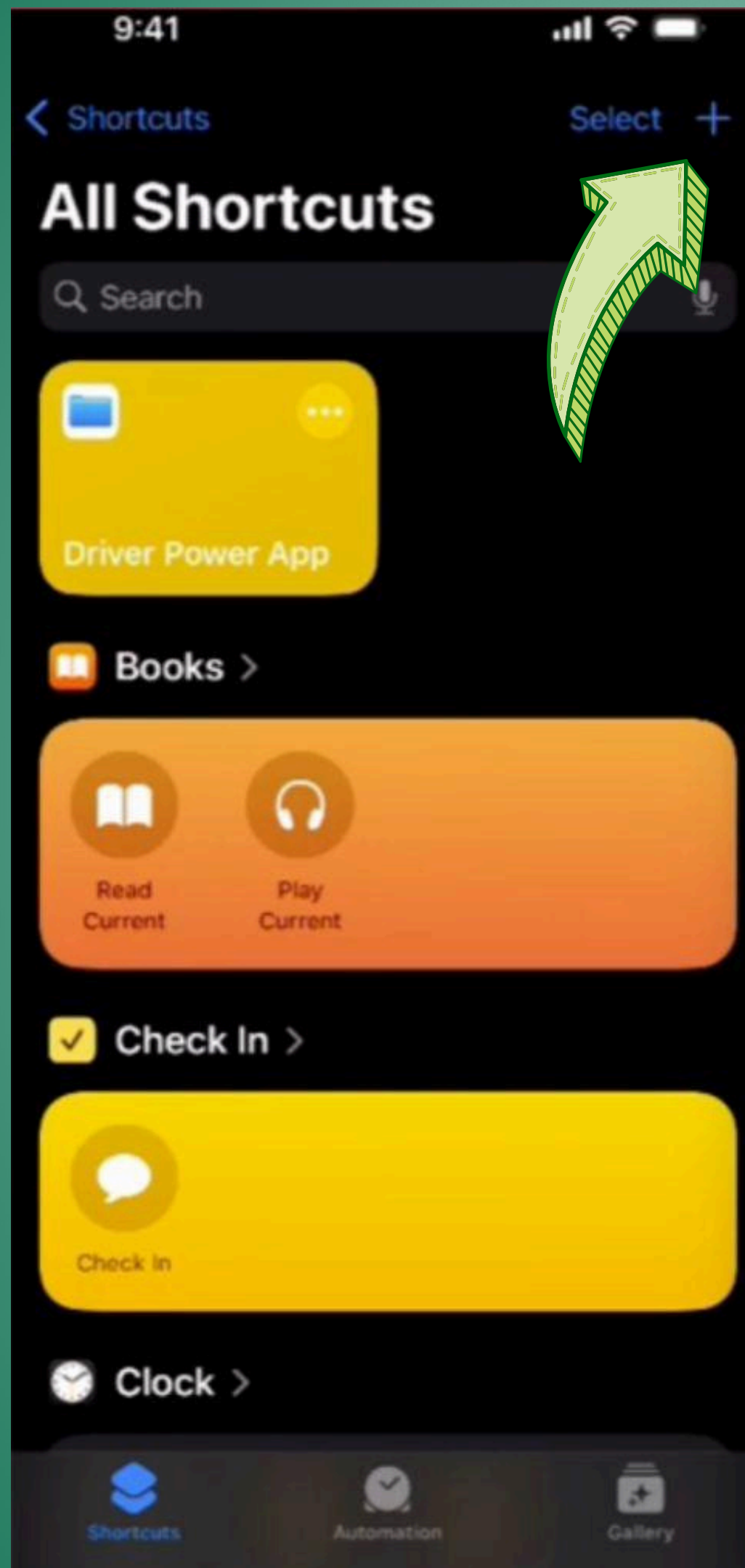


STEP 1

OPEN THE
SHORTCUTS APP
ON YOUR IPHONE

CONTINUE ON THE
NEXT PAGE



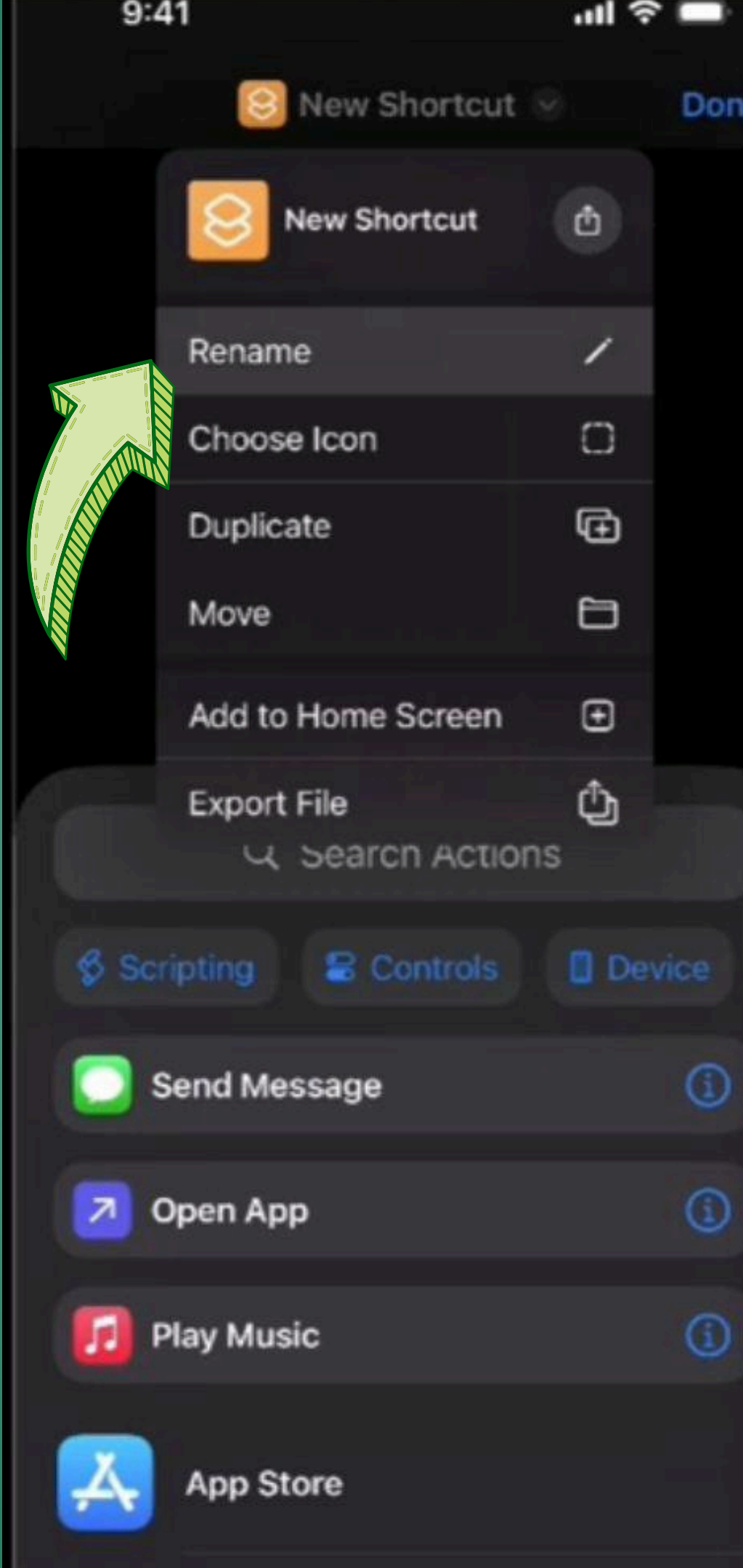


STEP 2

TAP THE "+" ICON
TO CREATE A NEW
SHORTCUT

CONTINUE ON THE
NEXT PAGE



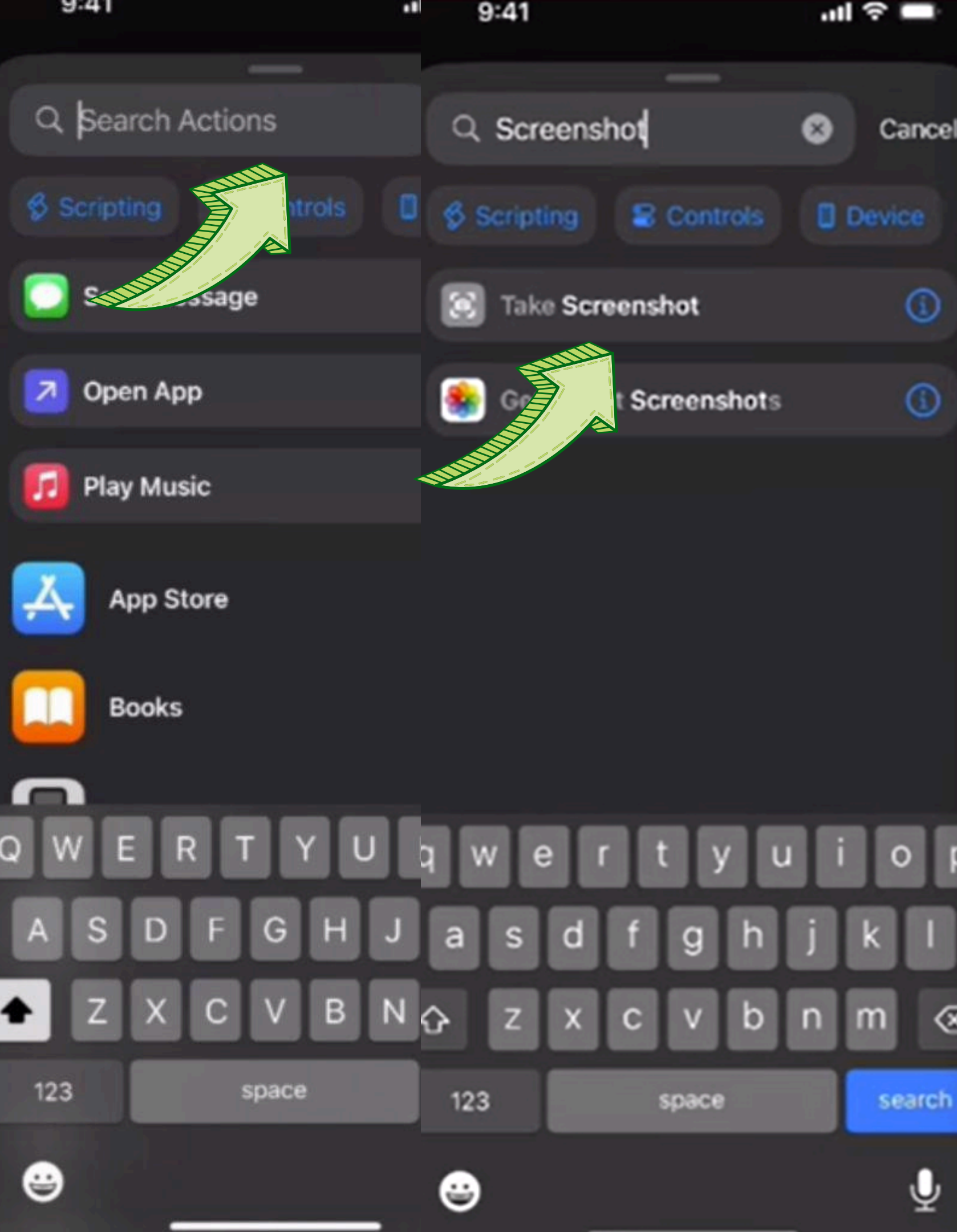


STEP 3

RENAME THE SHORTCUT
TO "DRIVER POWER
OFFERS"

CONTINUE ON THE
NEXT PAGE



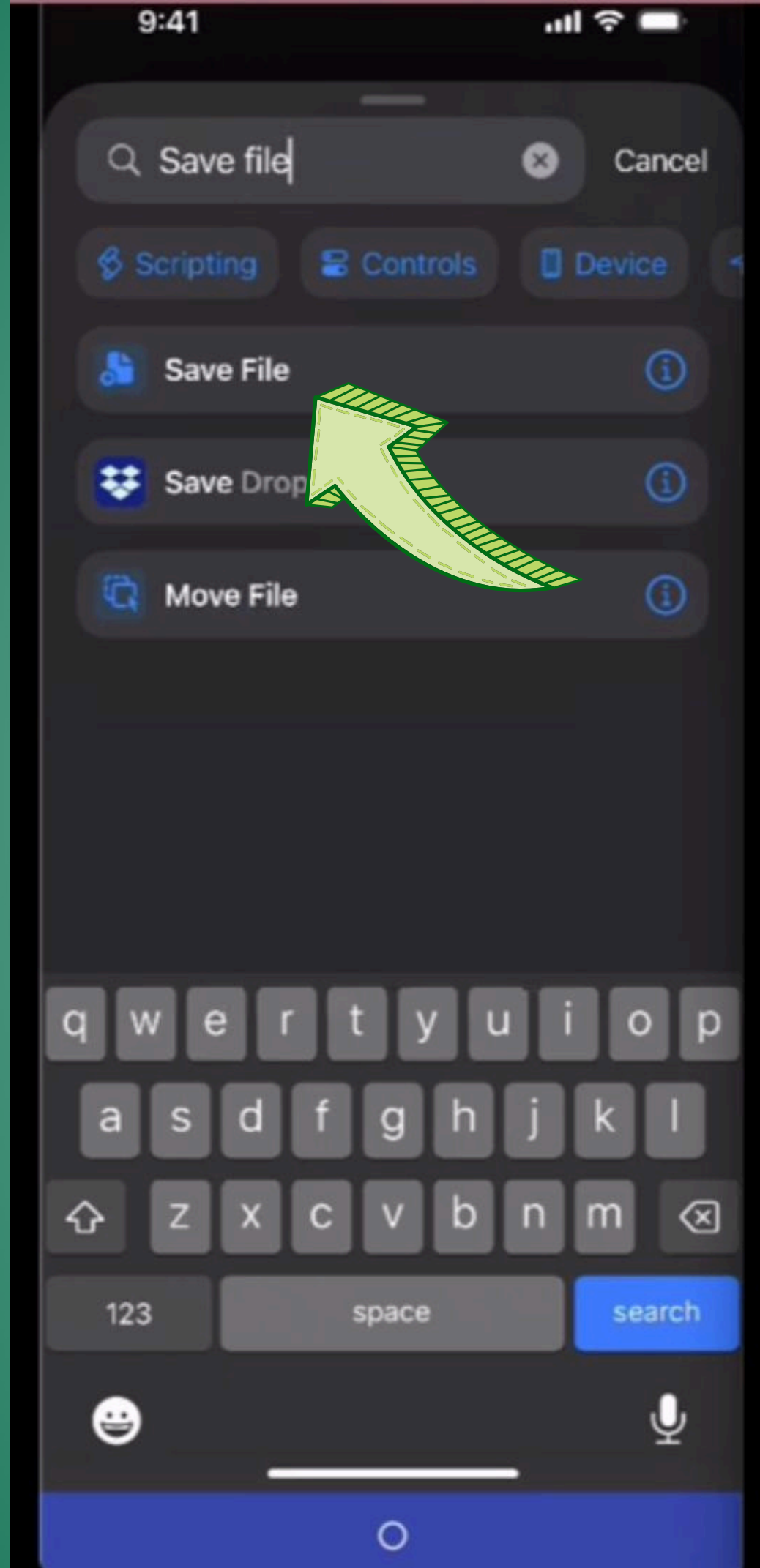


STEP 4

TAP "ADD ACTION", THEN
IN THE "SEARCH ACTIONS"
SECTION SEARCH FOR
"TAKE SCREENSHOT" AND
SELECT IT

CONTINUE ON THE
NEXT PAGE





STEP 5

THEN, SIMILARLY, TAP
"ADD ACTION" AGAIN,
SEARCH FOR "SAVE FILE",
AND SELECT IT

CONTINUE ON THE
NEXT PAGE



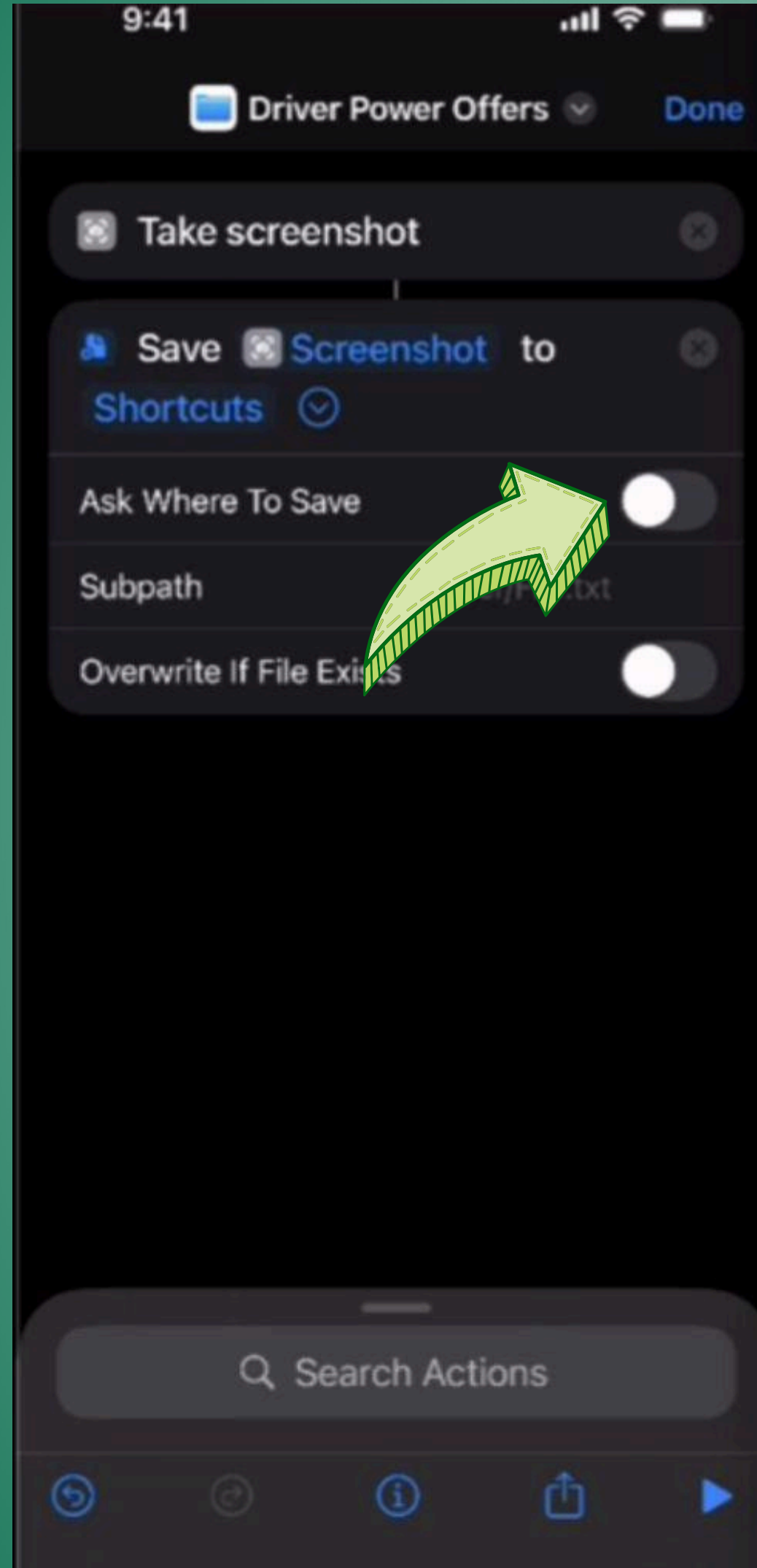


STEP 6

AGAIN TAP "ADD ACTION",
SEARCH FOR "TAKE
SCREENSHOT" AND CLICK ON
THE BLUE ARROW NEXT TO
"SCREENSHOT"

CONTINUE ON THE
NEXT PAGE



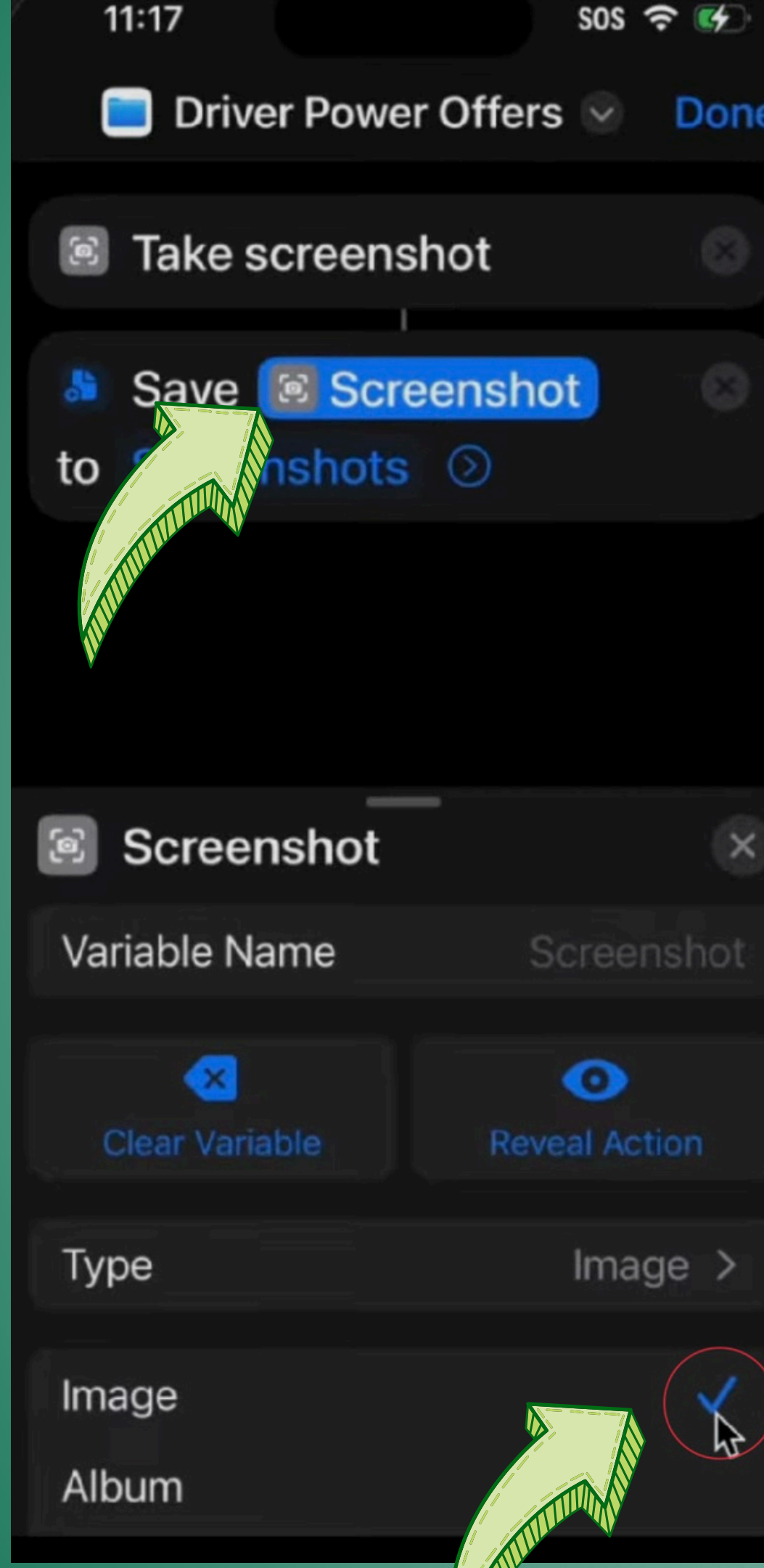


STEP 7

TURN OFF "ASK
WHERE TO
SAVE"

CONTINUE ON THE
NEXT PAGE



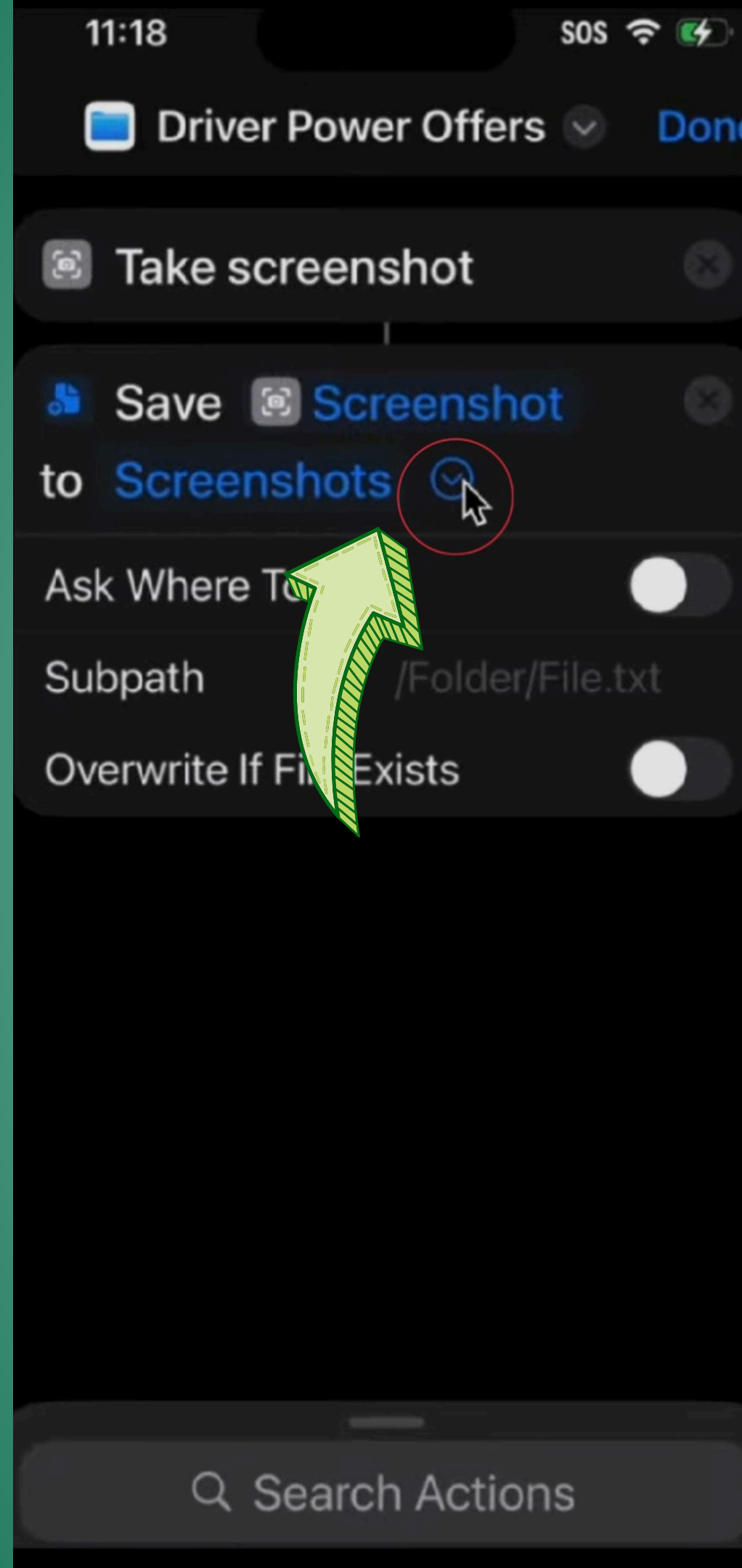


STEP 8

TAP THE WORD
"SCREENSHOT" AND
THEN VERIFY IT IS SET
ON IMAGE

CONTINUE ON THE
NEXT PAGE



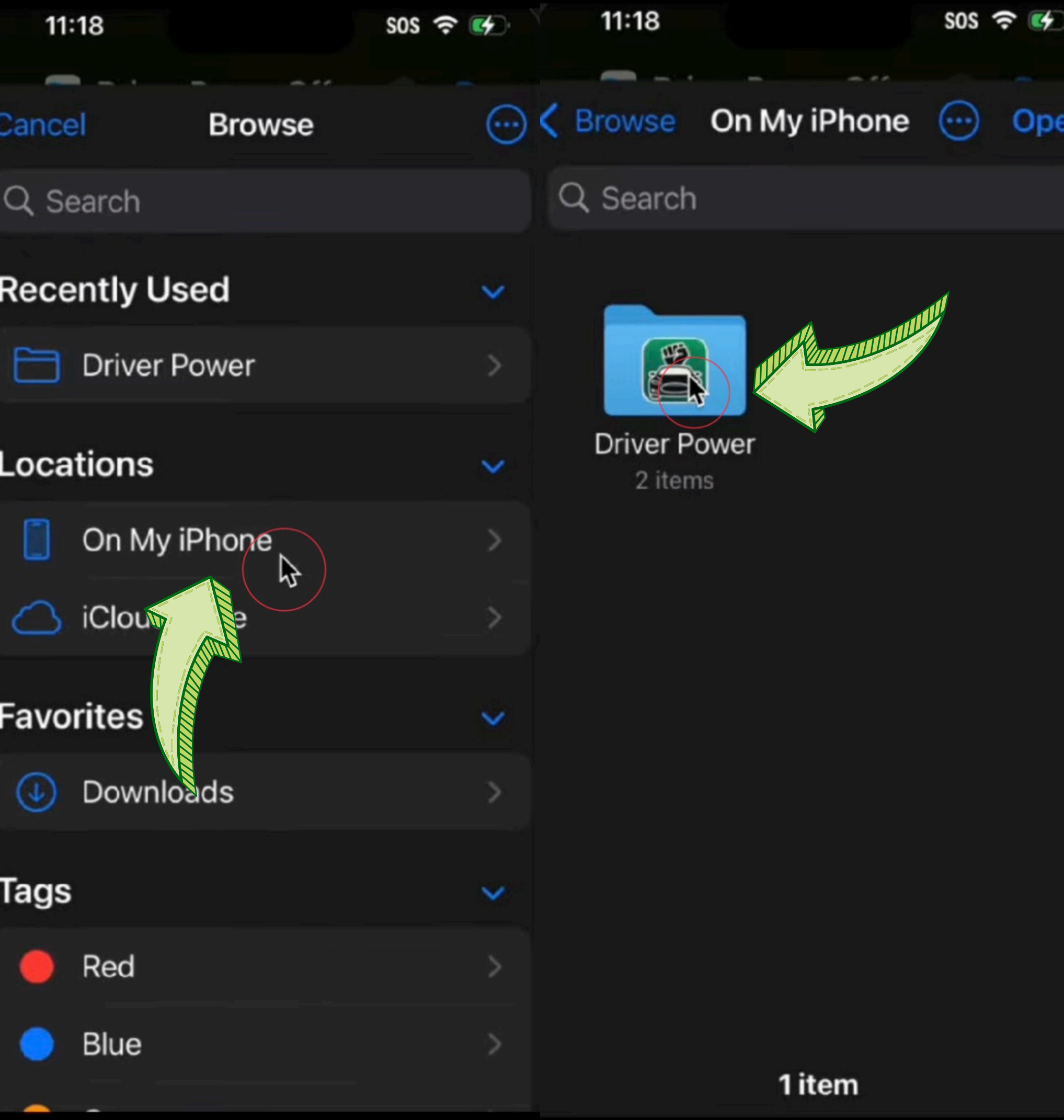


STEP 9

TAP THE SECOND
WORD
"SCREENSHOT" AND
GO TO BROWSE

CONTINUE ON THE
NEXT PAGE



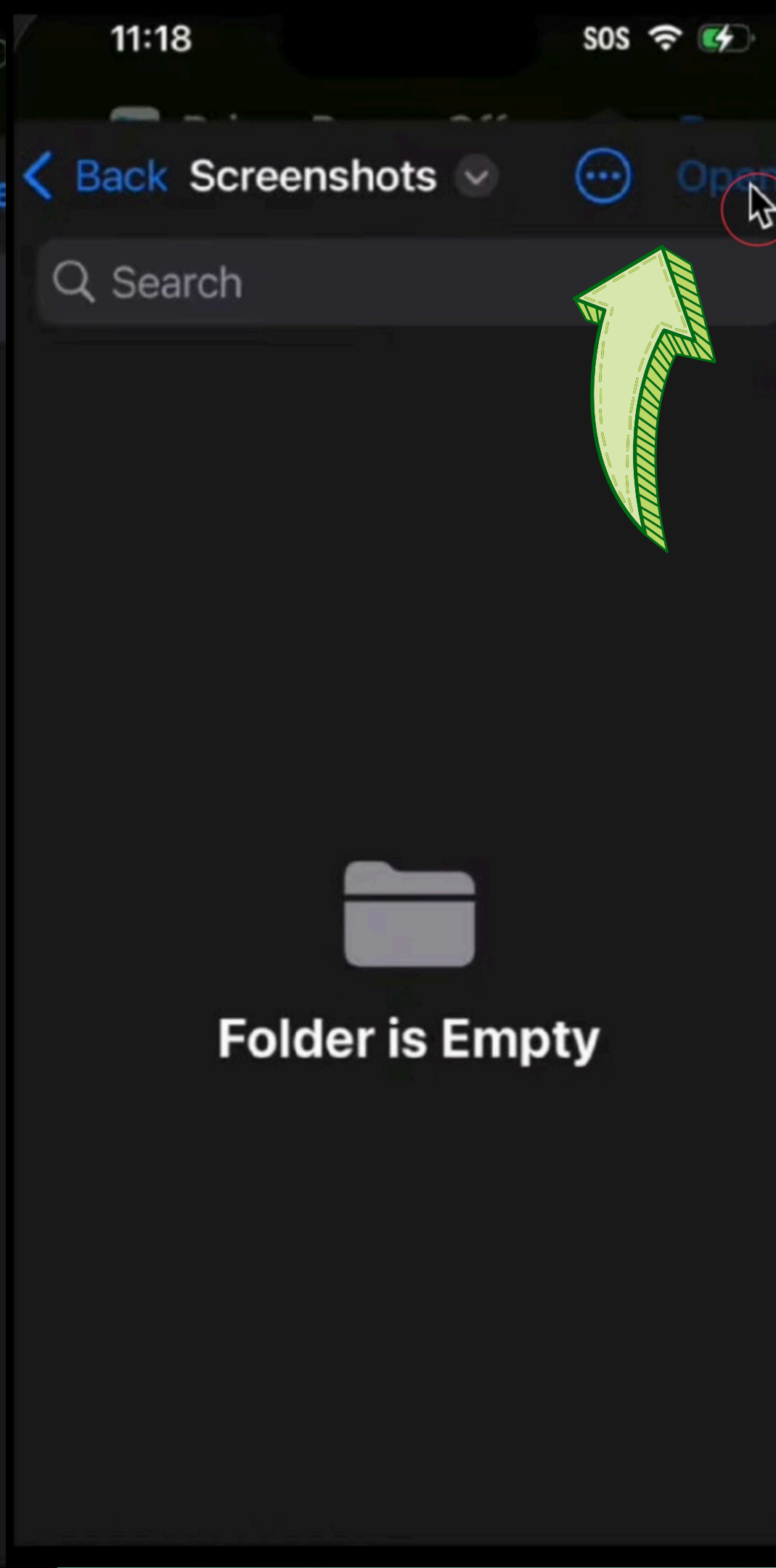
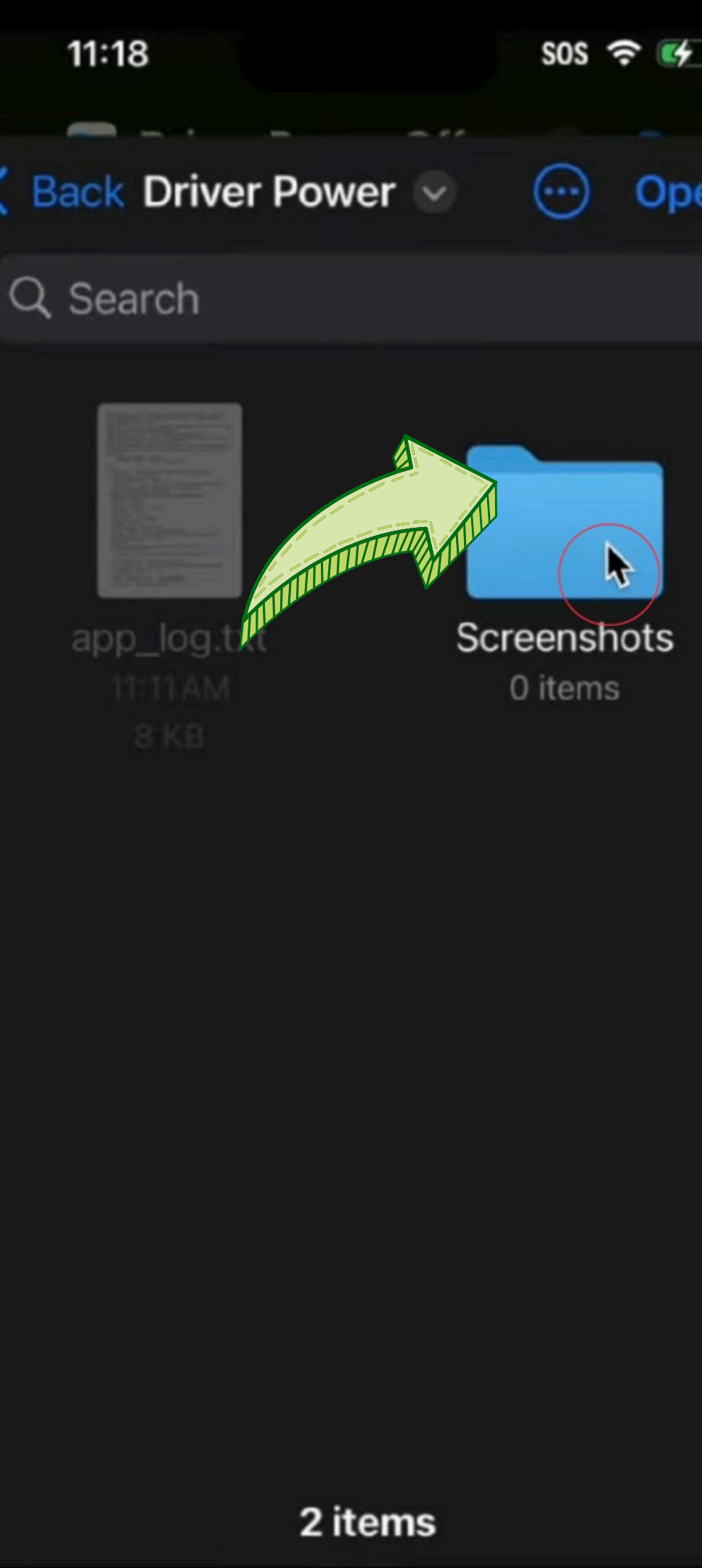


STEP 10

SELECT "ON MY
IPHONE". THEN
TAP THE FOLDER
"DRIVER POWER"

CONTINUE ON THE
NEXT PAGE



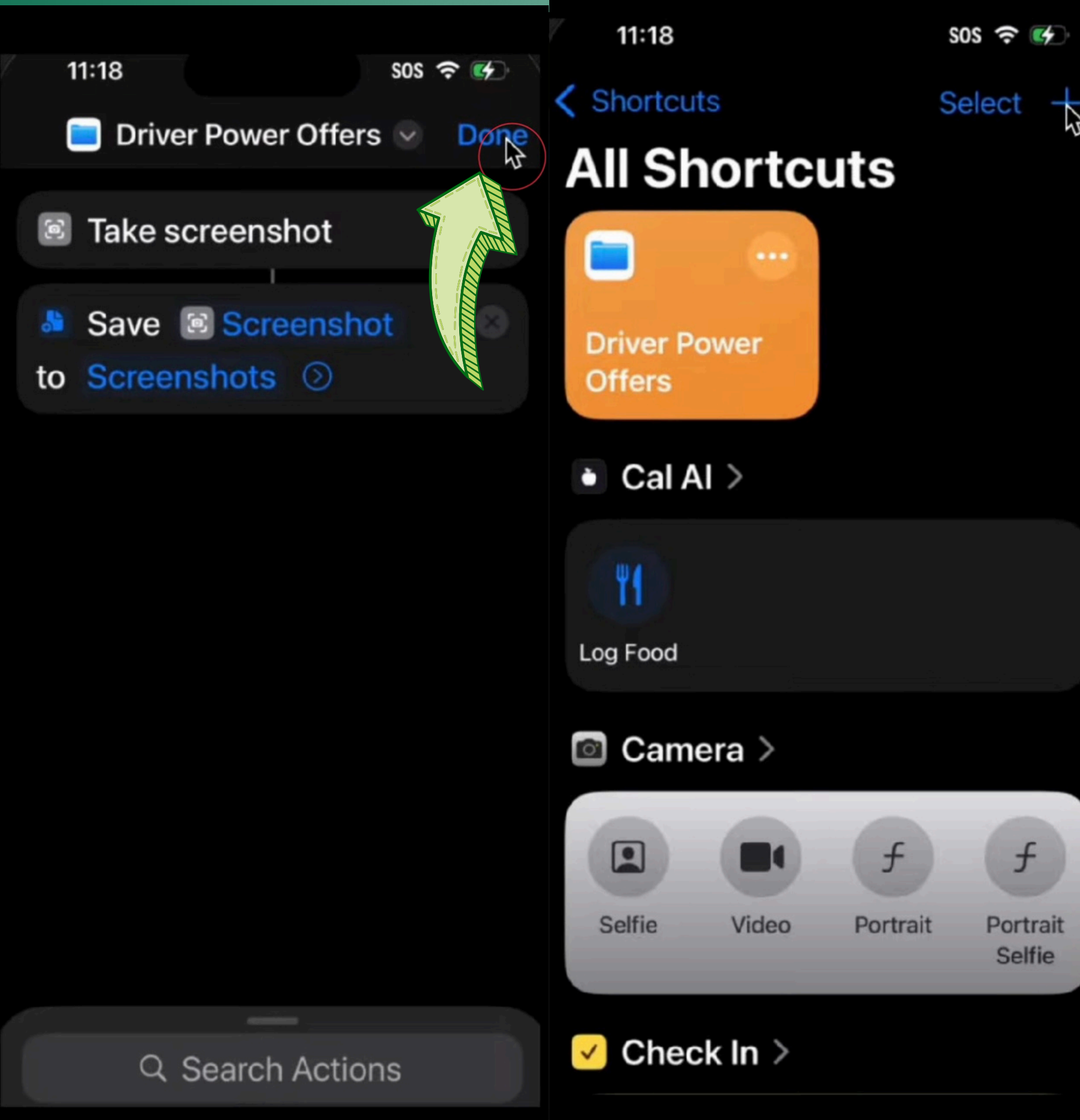


STEP 11

TAP THE FOLDER
"SCREENSHOTS"
AND TAP ON
"OPEN"

CONTINUE ON THE
NEXT PAGE





STEP 12

TAP "DONE" AND
IT SHOULD LOOK
LIKE THIS

CONTINUE ON THE
NEXT PAGE



PART 2: SET UP ASSISTIVE TOUCH









< Settings






Accessibility

Personalize iPhone in ways that work best for you with accessibility features for vision, mobility, hearing, speech, and cognition. [Learn more...](#)

VISION

-  VoiceOver Off >
-  Zoom Off >
-  Display & Text Size >
-  Motion >
-  Spoken Content >
-  Audio Descriptions Off >

PHYSICAL AND MOTORIC

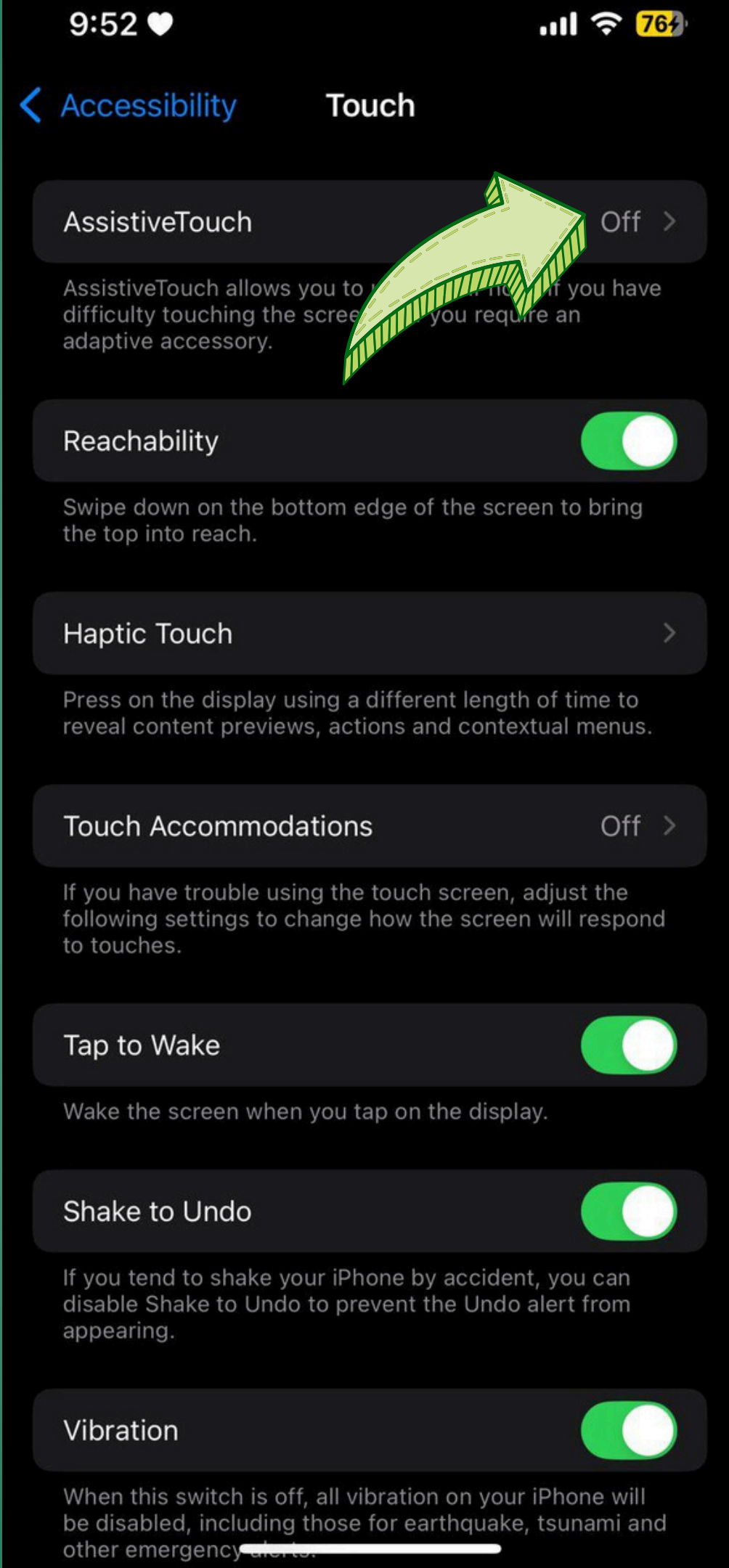
-  Touch >
-  Face ID & Attention >
-  Switch Control Off >

STEP 13

GO TO SETTINGS >
ACCESSIBILITY >
TOUCH

CONTINUE ON THE
NEXT PAGE



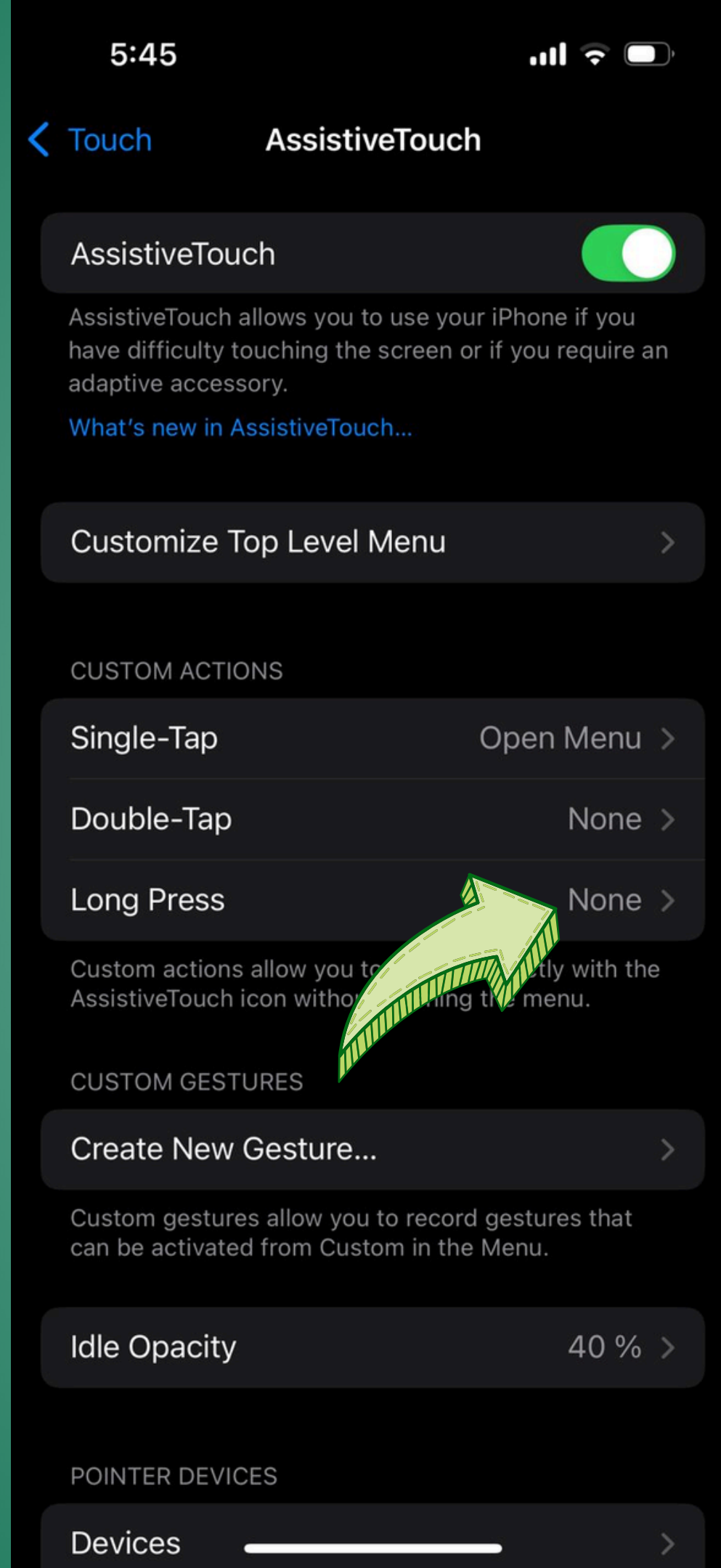


STEP 14

TAP “ASSISTIVE TOUCH”
AND
ENABLE IT

CONTINUE ON THE
NEXT PAGE



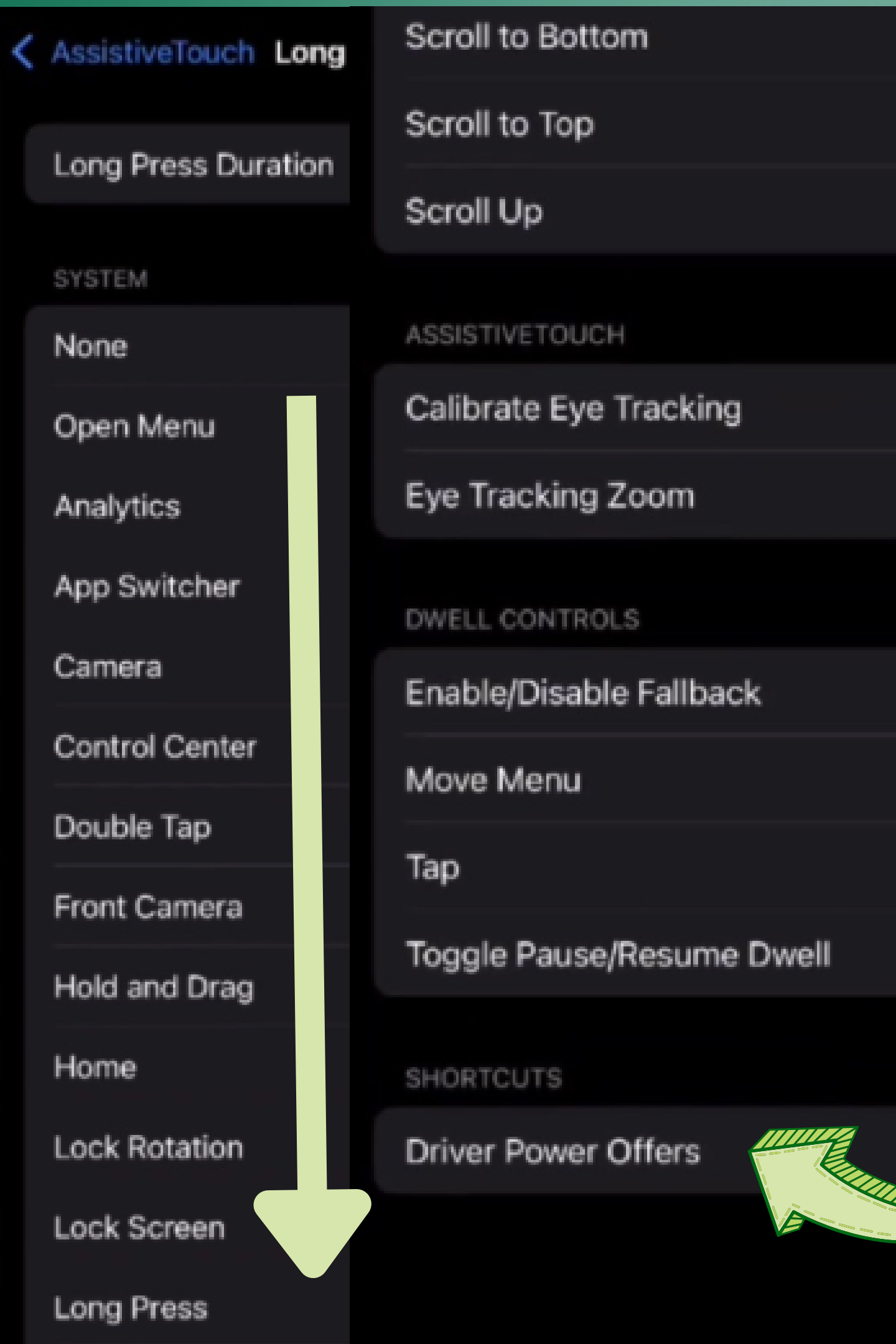


STEP 15

UNDER "CUSTOM
ACTIONS", TAP
"LONG PRESS"

CONTINUE ON THE
NEXT PAGE





STEP 16

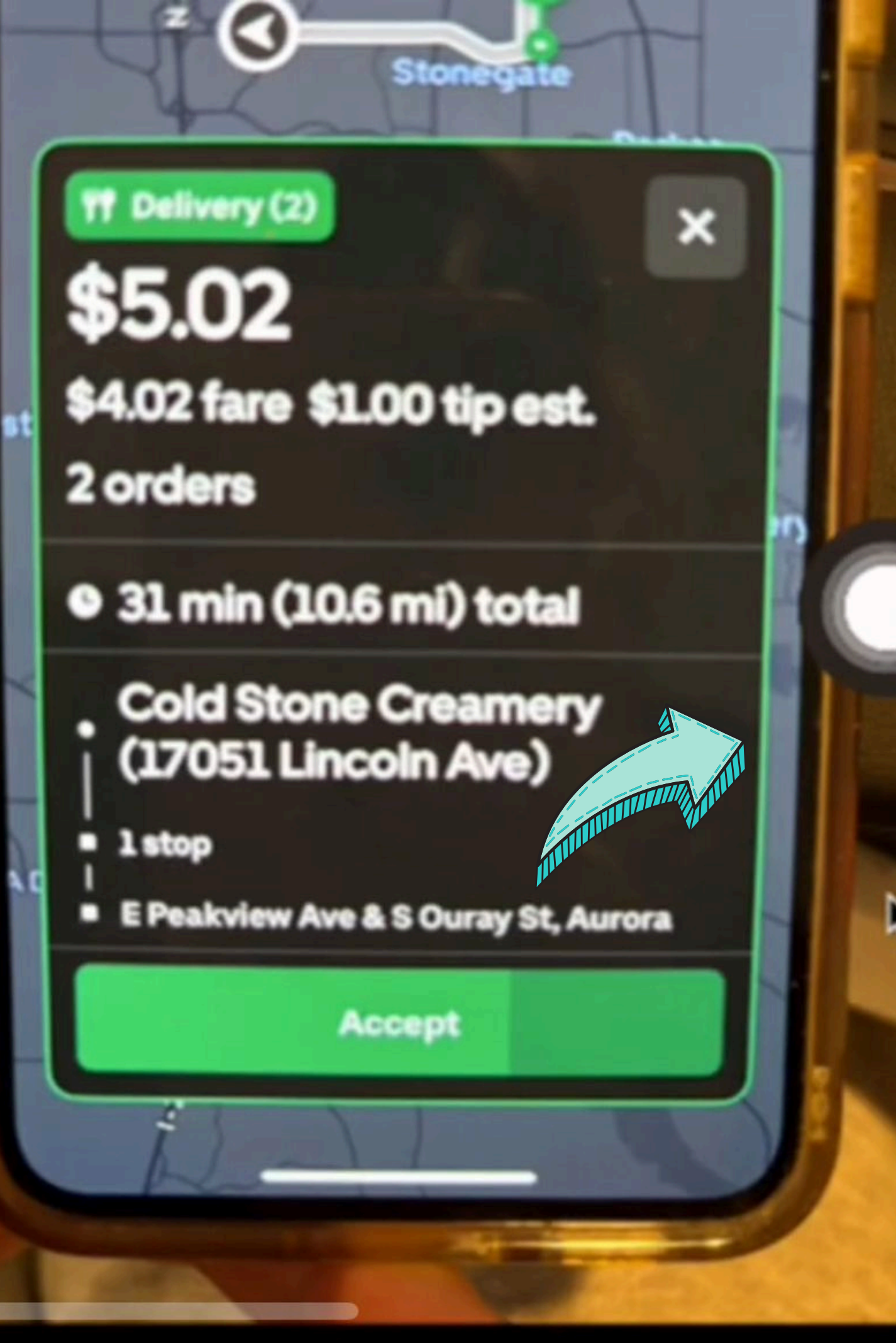
SCROLL DOWN AND
CHOOSE THE SHORTCUT
YOU JUST CREATED (DRIVER
POWER OFFERS)

CONTINUE ON THE
NEXT PAGE



STEP 17

TO RUN THE SHORTCUT,
LONG PRESS THE ON-
SCREEN ASSISTIVE
TOUCH BUTTON



CONTINUE ON THE
NEXT PAGE



STEP 18

THE SCREENSHOT WILL SAVE
AUTOMATICALLY, AND YOU'LL SEE
THE CALCULATIONS AS PUSH
NOTIFICATIONS OR DYNAMIC
ISLAND

